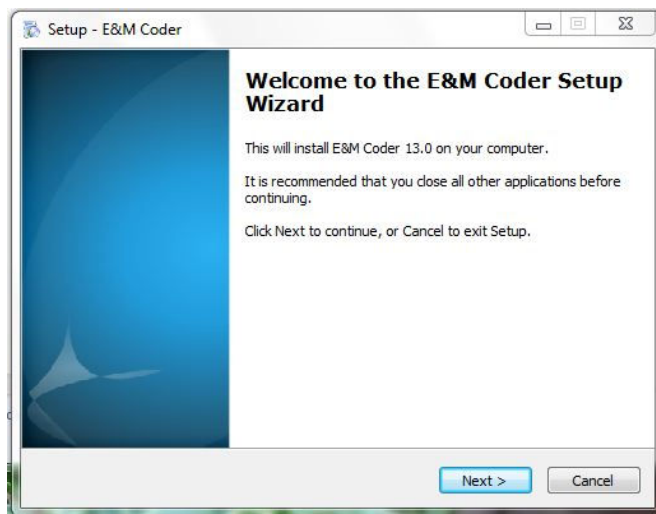


E&M Coder Quick Start Manual & Installation Instructions

Note: Before you begin, close all applications.

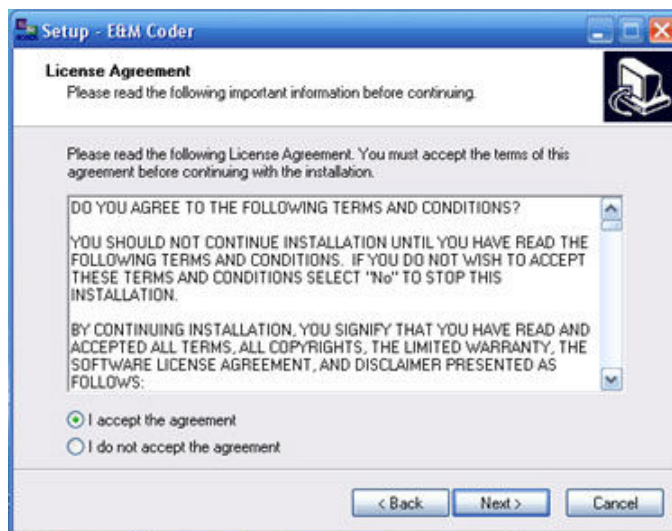
Should any questions or problems arise concerning the installation or operation of **E&M Coder™**, please call 1-800-585-6337 and ask for Customer Support. Office hours for Spring Management Systems Inc. are Monday through Friday, 9:00-5:00 EST.



Insert the **E&M Coder™** CD into your computer's *CD-ROM drive* or, if you've downloaded our software, click on the appropriate .exe file.

Note: The **E&M Coder** setup process will begin automatically.

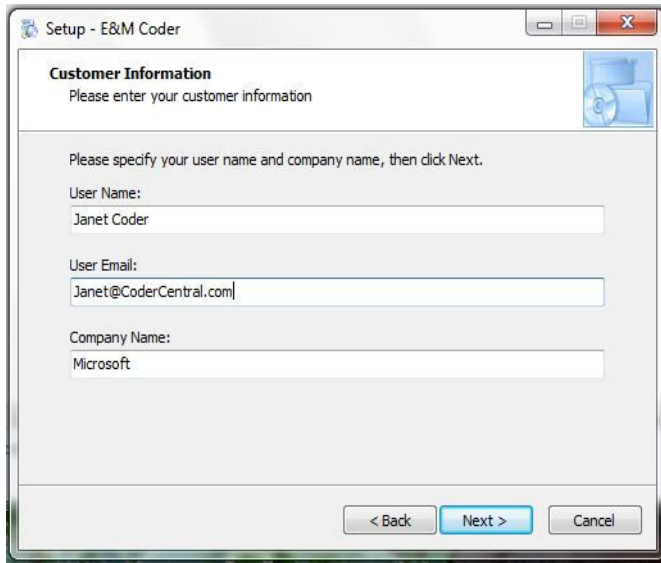
If you are a prior E&M Coder user, be sure to backup your database before you start this process.



The **Setup (License Agreement)** dialog box displays.

Click the **"I accept..."** radio button and **Next >** to accept the terms of the license agreement and continue.

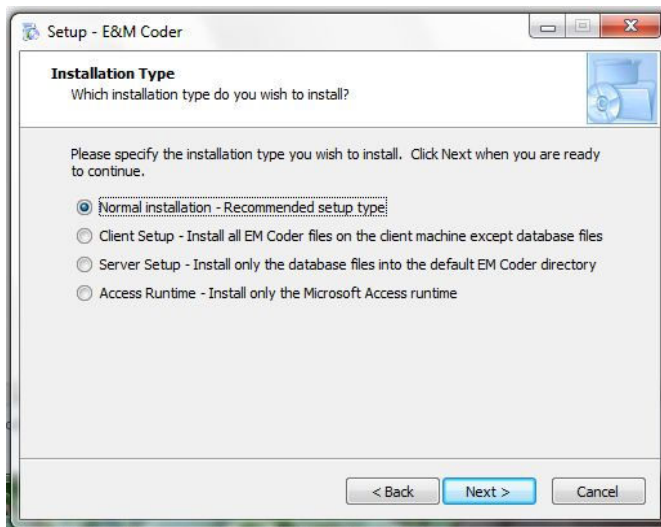
Note: Click the **Cancel** command button to decline the terms of the license agreement and exit the **E&M Coder** installation. You will receive an **Exit Setup message box**. Click **Yes** to exit setup, or **No** to return to setup.



The **Customer Information** dialog box displays. Please enter the following (3) required fields.

1. Enter **User Name**
2. Enter **User Email**
3. Enter **Company Name**
4. Click **Next >** to proceed to the next step, or **<Back** to return to the previous step.

Note: At anytime during installation you may click the **Cancel** button to exit the **E&M Coder** installation. You will receive an **Exit Setup message box**. Click **Yes** to exit setup or **No** to return to setup.

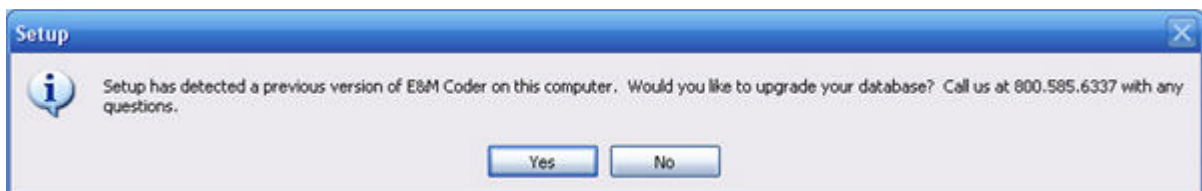


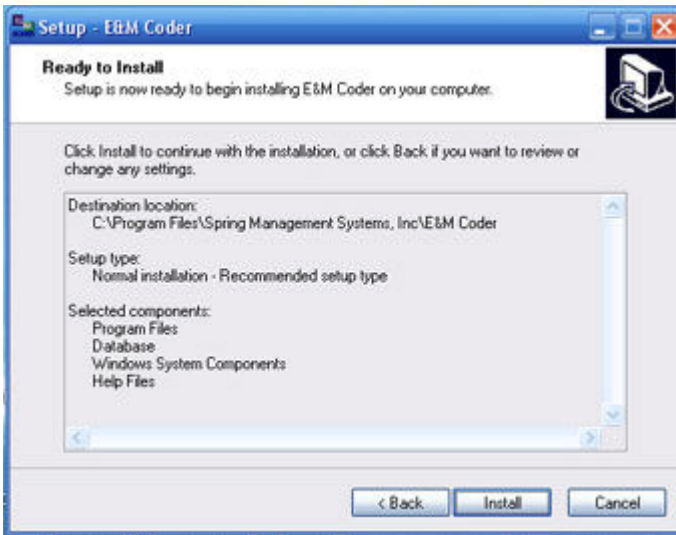
The **Setup Type** dialog box displays.

5. Select the setup type **Normal** from the *list box*.
6. Click **Next>** to proceed to the next step or **<Back** to return to the previous step.

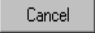
Note: If you are currently using an older version of **E&M Coder**, you will be prompted as to whether or not you wish to convert your current database. Select the *radio button* **Yes** (default) to convert your current database, or **No** to create a new, blank database.

If you choose NOT to convert your current database, all previously entered visits will be deleted!





The **Setup Status** dialog box displays and the installation process begins.

Note: At any time you may click the  command button to exit the **E&M Coder** installation.



The **InstallShield Wizard Complete** dialog box displays.

8. Click **Finish** to complete the setup.

******* Installation is complete! *******